



FOREST AVENUE APARTMENTS

PORTLAND, ME

AFFORDABLE, ACCESSIBLE LIVING
FOR ADULTS WITH DISABILITIES

**CROTCHED
MOUNTAIN**

OFFERING A LIFELONG ALLIANCE
TO PEOPLE WITH DISABILITIES

Rental Information:

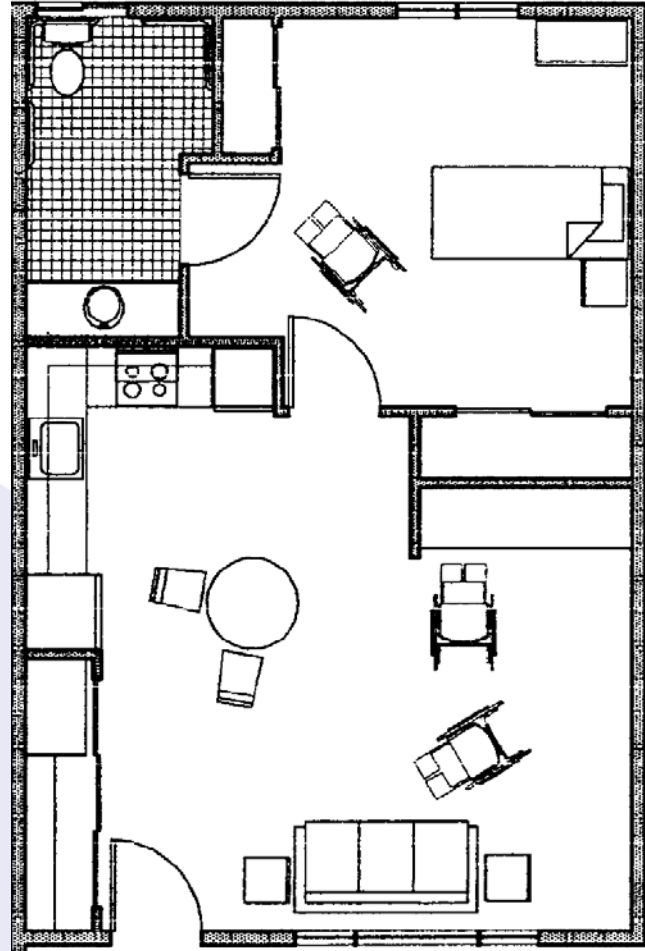
- Rent is based on 30% of a person's adjusted household income and includes heat and electricity.
- Pets are allowed if they meet policy criteria and if a security deposit is supplied.

Applicant Criteria:

- Adults with a permanent disability seeking affordable & accessibly designed living arrangements are encouraged to apply.
- Must meet US Dept of Housing & Urban Development (HUD) income eligibility requirements.

Building Features:

- Accessibly designed — built in 1995
- 14 one bedroom units; 600 sq ft
- 2 two-bedroom units; 836 sq ft
- Community space: includes laundry, small lounge, mailboxes, and office
- Central courtyard provides usable living space for individual or group activities
- Conveniently located on busline



Typical Unit

CROTCHED MOUNTAIN is a non-profit organization serving more than 1,500 children and adults with disabilities annually through a variety of community-based programs throughout the northeast. It also operates the widely-respected rehabilitation center in Greenfield, NH on the southern slope of Crotched (*pronounced CROTCH-ed*) Mountain.

Each of the 16 Units Offers:

- Adjustable counters and stove tops
- Refrigerator/freezer and wall oven
- Pantry and storage closets
- 4'x4' roll-in showers
- Smoke detection/sprinkler systems
- Baseboard hot water heat with individual room thermostats
- Telephone and cable tv hook-ups
- Wall-to-wall carpeting



For more information please contact:

Forest Avenue Apartments • 1300 Forest Ave., Portland, ME 04103

Phone: (207) 797-7102 • Fax: (207) 878-3790 • E-mail: forestave@crotchedmountain.org





DIRECTIONS TO

FOREST AVENUE APARTMENTS

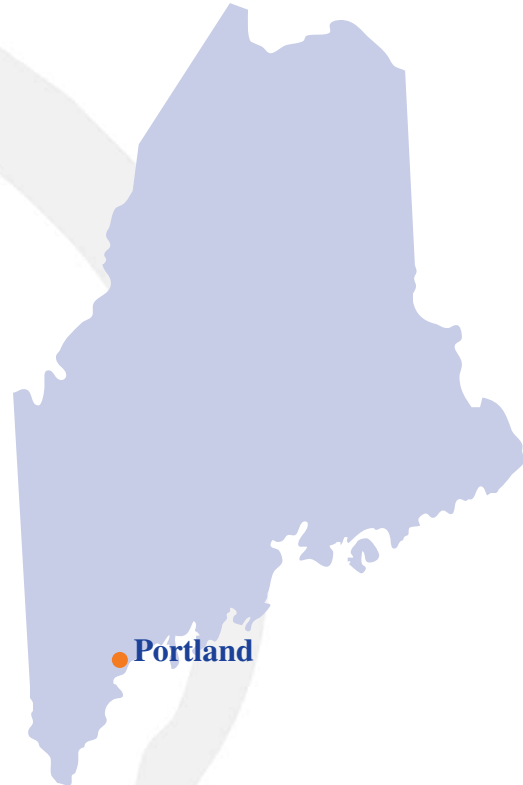
PORTLAND, ME

CROTCHED MOUNTAIN

OFFERING A LIFELONG ALLIANCE
TO PEOPLE WITH DISABILITIES

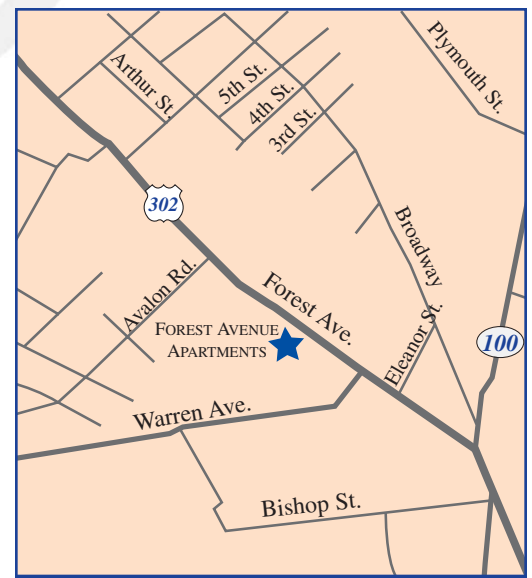
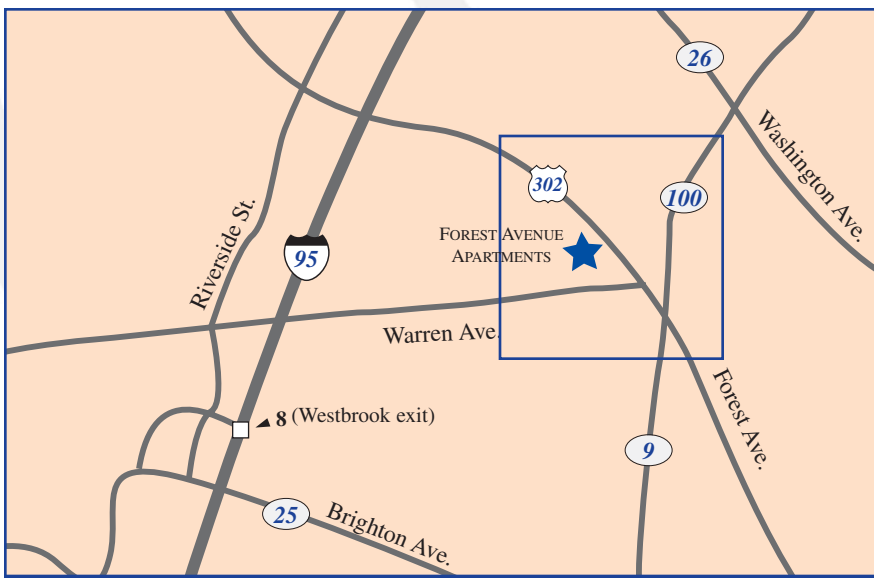
PORTLAND, MAINE, population 64,000, is a thriving coastal city which offers an Old Port District with boutiques, fine restaurants, and entertainment, as well as beautiful parks and beaches.

Residents can choose from a number of regional human service agencies. Public transportation offers easy access to area businesses, shopping centers, medical facilities, as well as educational and cultural resources.



From I-95: (Maine Turnpike)

- Take Exit 8 (Westbrook); go through toll booth and turn right onto Riverside Street
- At the second traffic light, turn right onto Warren Avenue, which ends at Forest Avenue
- Turn left onto Forest Avenue
- The apartment entrance will be just ahead on your left



For more information please contact:

Forest Avenue Apartments • 1300 Forest Ave., Portland, ME 04103

Phone: (207) 797-7102 • Fax: (207) 878-3790 • E-mail: forestave@crotchedmountain.org

